



## NAGL | North American Gemological Laboratory

410 Bellevue Way SE, Suite 1, Bellevue, WA 98004

(t) 425-637-0075 / (f) 425-283 0449

www.na-gl.com

Report No. 1212018

### Consumer Information Appraisal

Date: October 5, 2023

Effective Date: October 5, 2023

Purpose of Appraisal: Reference Retail Market Value

Function of Appraisal: Retail Sales Consumer Information

#### (1) 18K Yellow Gold Necklace

The necklace is centered with one (1) rectangular cushion mixed cut natural citrine set into a bezel setting. The necklace is also accented with one hundred twenty (120) bead set, round brilliant cut diamonds and thirty-seven (37) channel set, round brilliant cut fancy colored diamonds. The necklace measures 16.8mm wide at the center and tapers to 5.8mm wide along the omega style chain. The necklace measures 17 inches in length and is finished with a box clasp and safety.

### Item Details

Metal Verified: Electronically  
Finish: Bright polish  
Manufactured: Cast & assembled  
Item Weight: 70.05 g  
Condition: Very Good

### Appraised Value

**\$16,100.00**

US Dollars

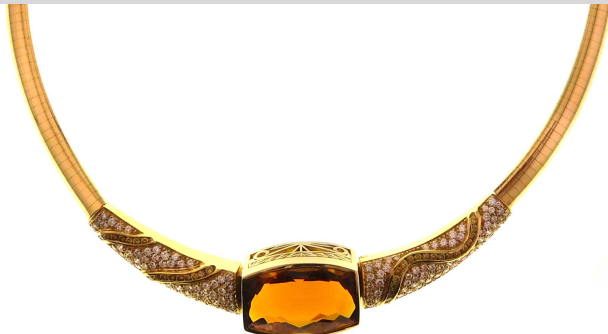
Does not include sales tax

Stones graded as mounting permits

All weights are estimated unless otherwise noted.

  
Kenneth A. Patterson, GIA GG

### Photograph



### Stone Information

#### (1) Rectangular Cushion Mixed Cut Natural Citrine Quartz 25.70 ctw

Measurements	21.90mm X 15.00mm X 10.93mm
Clarity	Lightly Included (LI1)
Hue	yellowish-Orange
Tone / Saturation	Medium Dark/Strong
Cut	Very Good
Polish/Symmetry	Good/Good
Transparency	Transparent
Girdle	Obscured by mounting.
Windowing	10-20%
Enhancement(s)	Heat
Fluorescence (LW)	None
Fluorescence (SW)	None

#### (120) Round Brilliant Diamond 1.67 ctw

Measurements	1.20mm-2.00mm
Clarity	VS1 - VS2
Color	F - G
Cut	Good

#### (37) Round Brilliant Diamond 0.66 ctw

Measurements	1.50mm-1.80mm
Clarity	VS2 - SI1
Color	Color Enhanced Fancy Vivid Yellow
Cut	Good

Gemstone(s) Total Weight..... 28.03 ctw