

# North American Gemological Laboratory

13400 NE 20th Street, Suite 19

Bellevue, WA 98005

## Consumer Information Appraisal

Appraised For

Appraisal # **40033869**

Appraisal Date 7/22/2014

Effective Date 7/22/2014

Appraisal Type Retail Sales

Value Type Retail

Purpose Replacement

### Retail Sales Consumer Information

One Pair Ladies, 18Kt Yellow Gold Ruby Earrings

The hoop style pierced earrings are each bead set with twenty-eight (28) round brilliant cut natural rubies. The earrings measures 20.0 mm tall and 19.0 mm wide. The earrings are finished with omega style backs.

Fifty-six (56) round brilliant cut natural rubies measure 1.7 mm and weigh an estimated total of 1.68 carat.

Clarity: Lightly Included (LI-1)

Color: Medium Dark, Strong, slightly purplish-Red

Cut: Very Good

Stone(s) graded as mounting permits.

Local and state taxes are not reflected in the total value

Total Value

**\$4,325.00**

US Dollar

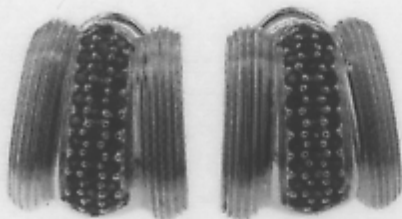
Metal Verified  
Stamped

Manufactured  
Cast/Assembled

Metal Finish  
High Polished

Condition  
Very Good

Total Weight  
22.05 g



**Kenneth A. Patterson**

Graduate Gemologist, G.G.

\$1306.50 Gold Per Oz.

Replaceable

Yes