



NAGL | North American Gemological Laboratory

410 Bellevue Way SE, Suite 1, Bellevue, WA 98004

(t) 425-637-0075 / (f) 425-283 0449

www.na-gl.com

Report No. 1098581

Consumer Information Appraisal

Date: May 25, 2022

Effective Date: May 25, 2022

Purpose of Appraisal: **Reference Retail Market Value**

Function of Appraisal: **Retail Sales Consumer Information**

(1) Ladies 18K White Gold Pearl & Diamond Ring

The ring is centered with one (1), post set, cultured Tahitian pearl. The top face of the shank are each accented with three (3), flush set, round brilliant cut diamonds. The ring measures 9.4mm at the top, rises 11.3mm above the finger, tapering to 4.2mm wide and 1.3mm thick at the base of the shank.

Stone Information

(1) Round Cultured Tahitian Pearl

6.00 ctw

Measurements	9.4mm
Body Color	Dark Gray
Overtone	Rose' and Green
Surface	Clean
Luster	Excellent
Nacre	Acceptable

(6) Round Brilliant Cut Diamond

0.54 ctw

Measurements	2.70mm-3.00mm
Clarity	SI1 - SI2
Color	G - H
Cut	Good

Gemstone(s) Total Weight..... 6.54 ctw

Item Details

Metal Verified: **Stamped**

Finish: **Matte**

Manufactured: **Cast & assembled**

Item Weight: **8.53 g**

Condition: **Very Good**

Appraised Value

\$4,475.00

US Dollars

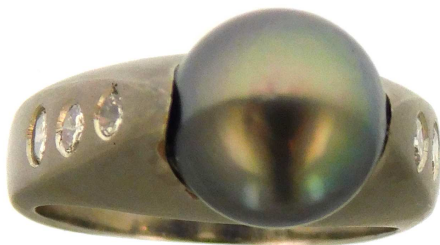
Does not include sales tax

Stones graded as mounting permits

All weights are estimated unless otherwise noted.

Kenneth A. Patterson, GIA GG

Photograph



Metal prices (per troy oz.) as of effective date: Gold \$1,866.00