



NAGL | North American Gemological Laboratory

410 Bellevue Way SE, Suite I, Bellevue, WA 98004

(t) 425-637-0075 / (f) 425-283 0449

www.na-gl.com

Report No. 1086445

Consumer Information Appraisal

Date: May 18, 2017

Effective Date: May 18, 2017

Purpose of Appraisal: Reference Retail Market Value
Function of Appraisal: Retail Sales Consumer Information

(1) Ladies 18K Yellow Gold Sapphire & Diamond Necklace

The pendant contains one (1), bezel set, round mixed cut natural blue sapphire, surrounded by fourteen (14), channel set, round brilliant cut diamond, flanked to each side by a heart shaped setting each pave' set with twelve (12) round brilliant cut diamonds. The pendant is attached to a 3mm wide curb link neck chain. The necklace measures 16 inches in length and is finished with a box clasp and figure eight safety.

Item Details

Metal Verified: Stamped Item Weight: 15.54 g
Finish: Bright polish Condition: Very Good
Manufactured: Cast & assembled

Appraised Value


\$4,700.00

US Dollars

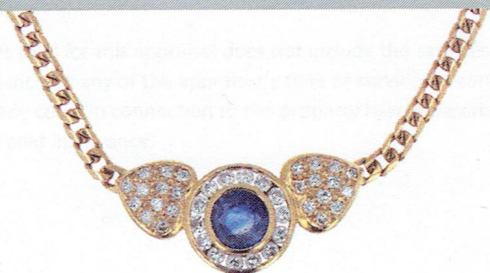
Does not include sales tax

Stones graded as mounting permits

All weights are estimated unless otherwise noted.


Kenneth A. Patterson, GIA GG

Photograph



Stone Information

(1) Round Mixed Cut Natural Sapphire Corundum 1.38 ctw

Measurements	6.40mm-6.50mm X 4.13mm
Clarity	Lightly Included (LI1)
Hue	violetish-Blue
Tone / Saturation	Medium Dark/Very Slightly Grayish
Cut	Good
Polish/Symmetry	Good/Good
Transparency	Transparent
Girdle	Obscured by mounting.
Windowing	Moderate
Enhancement(s)	Heat
Fluorescence (LW)	None
Fluorescence (SW)	None

(38) Round Brilliant Diamond 0.78 ctw

Measurements	1.50mm-2.00mm X 1.10mm (Depth Est.)
Clarity	SI1 - SI2
Color	H - I
Cut	Good

Gemstone(s) Total Weight.....2.16 ctw